

PERI Safety Components

Increasing the level of safety on your construction site

Product Brochure – Issue 02/2023



Content

Solution overview

- 5 PERI Safety Components**
Increasing the level of safety on your construction site
- 6 PERI Safety Components at a glance**
The most appropriate solution for each and every requirement

Guardrails

- 8 PROKIT Edge Protection**
For the highest standards of safety and cost-effectiveness

Catch Fan

- 10 Catch Fan**
For comprehensive lateral protection

Issue 02/2023

Publisher

PERI SE
Formwork Scaffolding Engineering
Rudolf-Diesel-Strasse 19
89264 Weissenhorn
Germany
info@peri.com
www.peri.com

Stairways

11 Stairways

For safe access at heights of up to 5 m

Access solutions

12 Truck Loading Platform

For loading and unloading trucks safely

13 Walkway Mats

For moving around safely in all weather conditions

Safety for shuttering

14 Safety for reinforcement

For safe working conditions at the formwork

15 Safety for stop ends

For safe working conditions at the formwork

Important notes

All current regulations and guidelines applicable in countries where our products are used must be observed.

The photos shown in this brochure feature construction sites in progress. For this reason, safety and tie details in particular cannot always be considered conclusive or final. These are subject to the risk assessment carried out by the contractor.

In addition, the computer graphics used are to be regarded as system representations. To facilitate understanding, these and the detailed illustrations shown have been partially reduced to certain aspects. The safety equipment that is not shown

in these detailed descriptions must nevertheless be available. The systems or items shown might not be available in every country.

Safety instructions and load specifications are to be strictly observed at all times. Separate structural calculations are required for any deviations from the standard design data.

The information contained herein is subject to technical changes in the interests of progress. Errors and typographical mistakes reserved.



PERI Safety Components

Increasing the level of safety on your construction site

PERI can supply you with the right accessories and components for all aspects of the in-situ concreting process. With our extensive range of PERI safety accessories, we can help you to significantly increase the level of safety on your construction site.

PERI safety accessories offer cost-effective solutions that set new standards in terms of occupational safety and sustainability.

With our weatherproof PROKIT Edge Protection Barriers for safe work procedures at the open slab edge, and a Catch Fan as a safety net for people as well as falling objects, we are able to offer you a solution that is tailored to your requirements.

What's more, our range of different construction stairways sizes provide safe access between the various levels of the construction site.

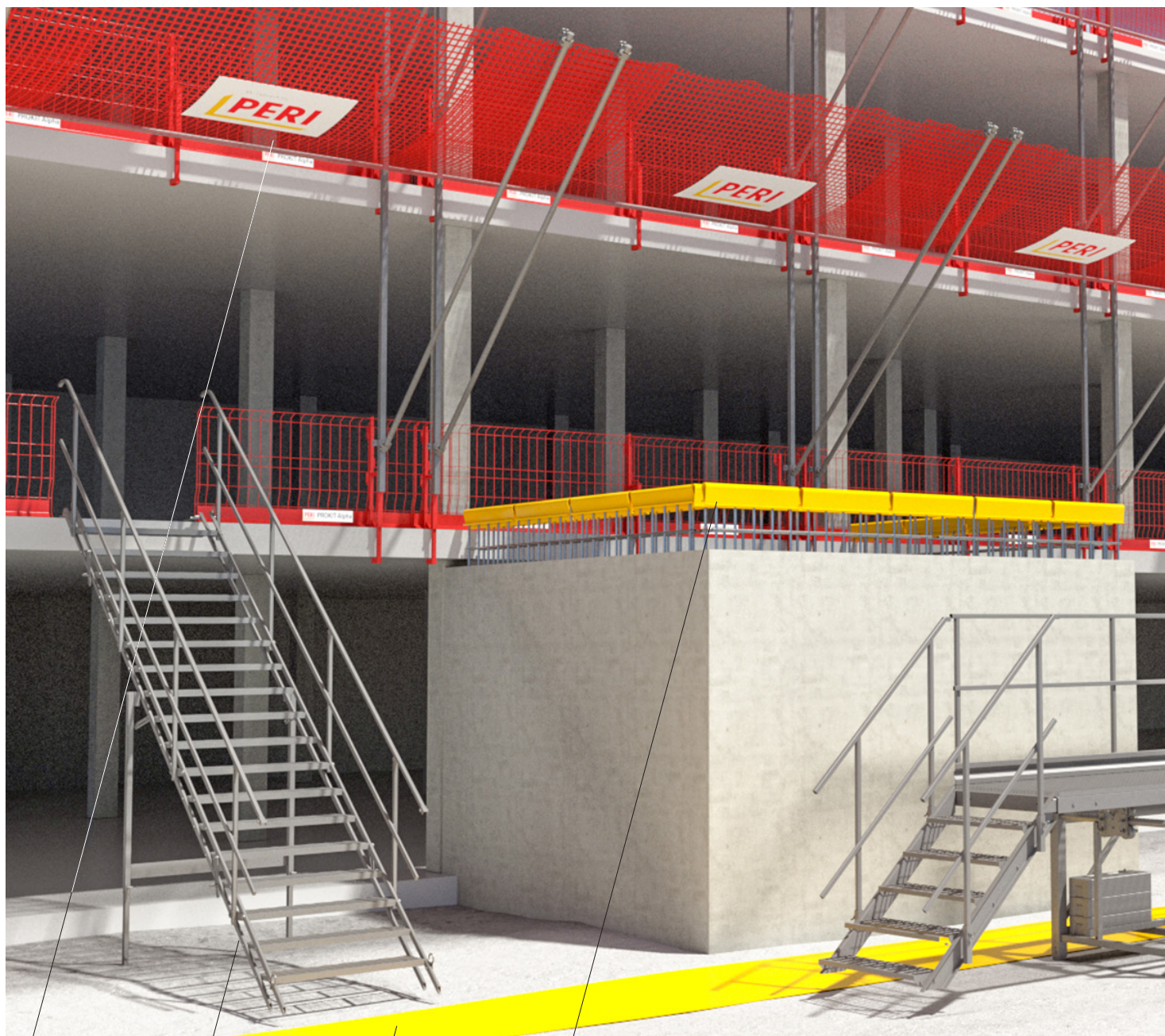
Our Truck Loading Platforms will enable you to load and unload trucks safely. Walkway Mats, which ensure that walkways are safe in all weather conditions, are also included in the portfolio.

Other types of reinforcement components round off the PERI safety portfolio and provide additional protection for personnel on the construction site.



PERI Safety Components at a glance

The most appropriate solution for each and every requirement



Catch Fan

Stairways

Walkway Mat

Safety for reinforcement



Truck Loading Platform PROKIT Edge Protection

PROKIT Edge Protection

For the highest standards of safety and cost-effectiveness



Thanks to the product portfolio of the PROKIT family, PERI can provide you with the ideal barrier system for work operations at the open slab edge.

PROKIT Side Mesh Barriers ensure that work areas and traffic routes remain safe, thereby increasing the level of safety for construction site personnel. Whether it's for a concrete construction, girder or sheet pile wall – PERI can offer you the

ideal lateral protection solution to meet your construction site requirements. Because PROKIT Side Mesh Barriers are made up of just a few individual components, they can be assembled extremely quickly without the need for special tools.

PROKIT

The 1.10-m-high, quickly assembled PROKIT EP 110 serves as temporary guardrail for open slab edges. The established, powder-coated system also provides flexible solutions for complex building geometries without any planning effort, combined with a high level of robustness. The relevant components can be installed easily, quickly and safely and adapted to the conditions on site.



The new generation of the PROKIT Barrier

The new side mesh barrier is fully compatible with the well-established PROKIT EP 110 System. When combined with the "Alpha" product package, the next-generation PROKIT barrier provides the most optimal cost effective solution with at the same time a high level of safety for you.

The benefits to you at a glance:

- Temporary edge protection at the fall edges of slabs and walls in accordance with DIN EN 13374, classes A and B; can also be used on stairs in conjunction with guardrail boards
- Temporary lateral protection on PERI formwork and scaffolds in accordance with DIN EN 12811
- The 260-cm-long side mesh barrier is ideal for open slab edges
- Also available in lengths of 240 cm, 120 cm and 90 cm; compatible with the elements of the MAXIMO and TRIO Panel Formwork
- The barriers are also available in other colours on request
- For an even greater level of safety, the current system can be extended to a height of 1.75 m, providing protection for an even larger area of the slab edge.

Catch Fan

For comprehensive lateral protection

Catch fans are suitable both as a safety net for people and for falling objects and small parts.

Combined with the PERI PROKIT Barrier System, it constitutes an excellent safety solution for working at height. The Catch Fan is a cost-effective solution for protecting anyone who is working on the construction site as well as passers-by and nearby objects such as cars in parking areas under the structure.



The benefits to you at a glance:

- Available in the dimensions 3.00 m x 4.00 m and 3.00 m x 6.00 m
- Safety net made of weather-resistant polypropylene
- Optimised product weight for both sizes
- Temporary safety net in accordance with DIN EN 1263
- Can also be used as a safety net for personnel if the relevant requirements are met
- Edges need to be secured

Stairways

For safe access at heights of up to 5 m

Stairways of various heights allow personnel to ascend safely to heights of up to 5 m.

The step width of 1 m and the handrail on both sides ensure the utmost level of safety whenever the stairs are ascended or descended.



The benefits to you at a glance:

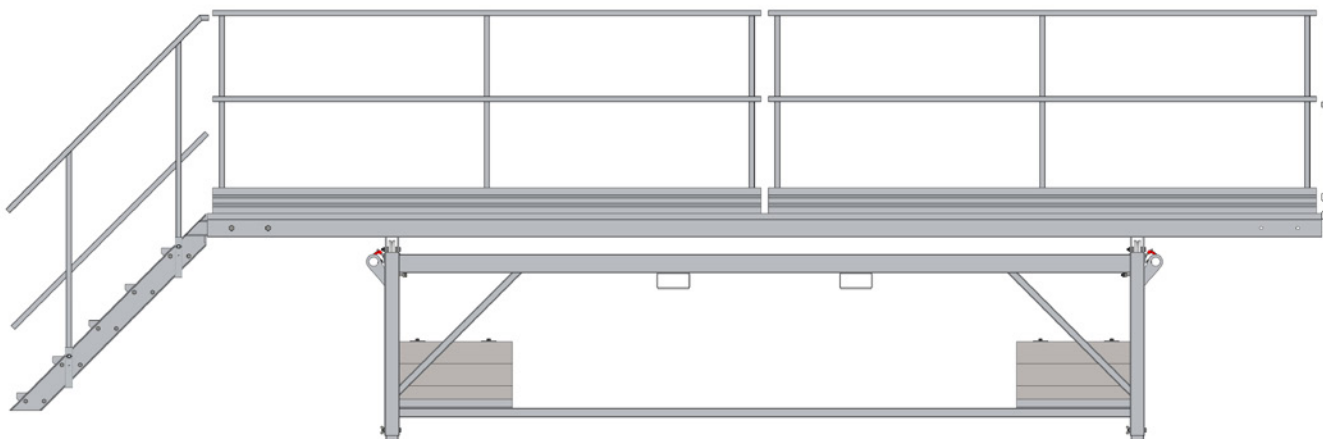
- Ability to move safely and easily between levels on the construction site
- Available with 3/6/9/12/15 or 18 steps
- Option of combining different heights for various application scenarios
- Step tread width of 1.00 m
- Handrail on both sides for greater level of safety
- Made of galvanised steel, supplied pre-assembled or in single components
- Temporary access solution in accordance with EN 12811-1

Truck Loading Platform

For loading and unloading trucks safely

PERI can also supply you with a platform that will enable you to load and unload trucks safely.

This minimises the risk of falling and paves the way for more efficient work processes with a high degree of sure-footedness.



Product features:

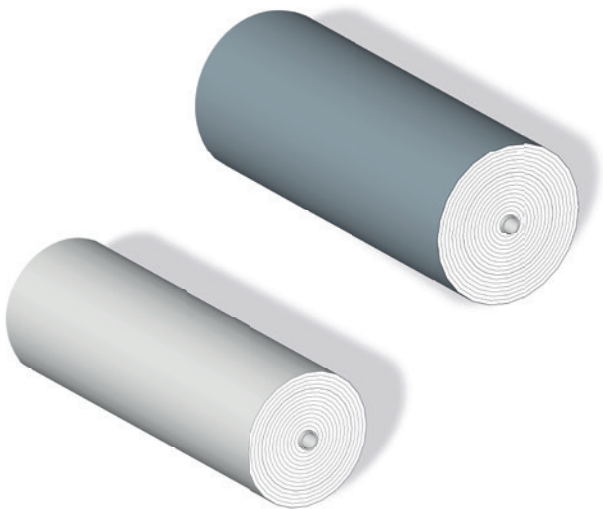
- Dimensions: 6.1 m x 1.2 m
- Weight: 900 kg
- Single version or double (extended) version available
- Hot-dip galvanised steel
- Compliant with EN 12811-1

Walkway Mats

For moving around safely in all weather conditions

By installing Walkway Mats, you are enabling your construction site personnel to move around safely in all weather conditions.

You can use this Walkway Mat on both unprepared and ready prepared surfaces. In addition, it can be used for guidance purposes on construction sites, reducing the risk of accidents by clearly marking walkways.



Product features:

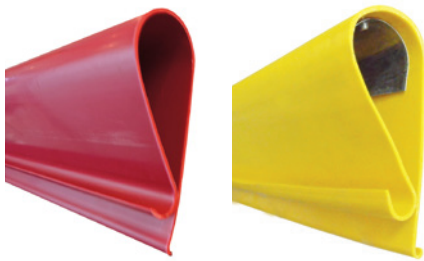
- Dimensions: 1 m x 10 m
- Available in two thicknesses: 3 mm and 10 mm

Safety for reinforcement

For safe working conditions at the formwork

PERI can also provide the ideal solution for protecting construction site personnel when they are working close to formwork and reinforcement.

Protective caps and protective profiles can be used to cover reinforcing steel in a puncture-proof manner, thus preventing injuries involving reinforcing steel on the construction site. These are available with or without a steel insert.



Benefits of NEVOSAFE Protective Profiles:

- Available in two versions: NEVOSAFE and NEVOSAFE-PLUS
- Reusable
- Can be installed horizontally and vertically
- Made of weatherproof plastic
- Safe and robust due to ribbed construction
- Available in yellow or red to improve visibility

Additional benefits of NEVOSAFE-PLUS Protective Profiles:

- Steel core for guardrail
- Fall protection from a height of 3 m, tested for up to 100 kg; test results available on request



Benefits of NEVOSAFE Protective Caps:

- Available in two versions: NEVOSAFE and NEVOSAFE-PLUS Reusable
- Can be installed horizontally and vertically
- Made of weatherproof plastic
- Safe and robust due to ribbed construction
- Available in yellow or red to improve visibility

Additional benefits of NEVOSAFE-PLUS Protective Caps:

- Steel core for guardrail
- Fall protection from a height of 3 m, tested for up to 100 kg; test results available on request

Safety for stop ends

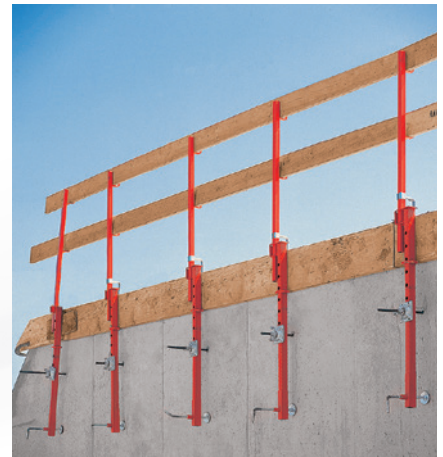
For safe working conditions at the formwork

PERI can provide you with sophisticated stop end accessories that will significantly increase the level of safety on your construction site. These will enable you to form slabs and floor slabs both quickly and reliably.

The accessories can be used many times over and are extremely versatile. This makes them particularly cost-effective. They also provide greater safety at the open building edge than conventional solutions without system components.

Slab Stopend Bar 105

You can use the slab stopend bar to form slab stopends that are up to 50 cm thick and are flush with the wall. The system-integrated adjustable spindle allows you to adjust the height of a stop end that is up to 14 cm thick.



Formwork Bracket-2

The Formwork Bracket-2 is the perfect solution for slab cantilevers of up to 50 cm and vertical slab stopends with a slab thickness of up to 30 cm. The cantilever can be adjusted precisely with the quick jack nut on the self-cleaning thread. The conical-shaped wall joist prevents sinking under load.



**The optimal system for
all projects and every
requirement**



Wall formwork



Column formwork



Slab formwork



Climbing systems



Bridge formwork



Tunnel formwork



Shoring



Working scaffolds for construction



Working scaffold facades



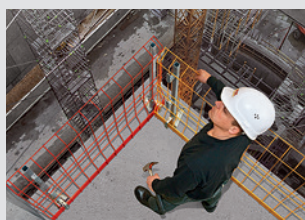
Working scaffolds for industry



Access means



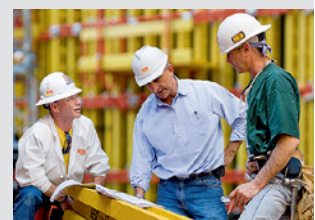
Safety scaffolds



Safety systems



System-independent accessories



Services



PERI SE
Formwork Scaffolding Engineering
Rudolf-Diesel-Strasse 19
89264 Weissenhorn
Germany
Phone +49 (0)7309.950-0
Fax +49 (0)7309.951-0
info@peri.com
www.peri.com

