

SKYDECK SD Beam

The simple solution for beams using the SKYDECK system

Beams concreted together with the slab - this is made possible with the SKYDECK SD Beam.

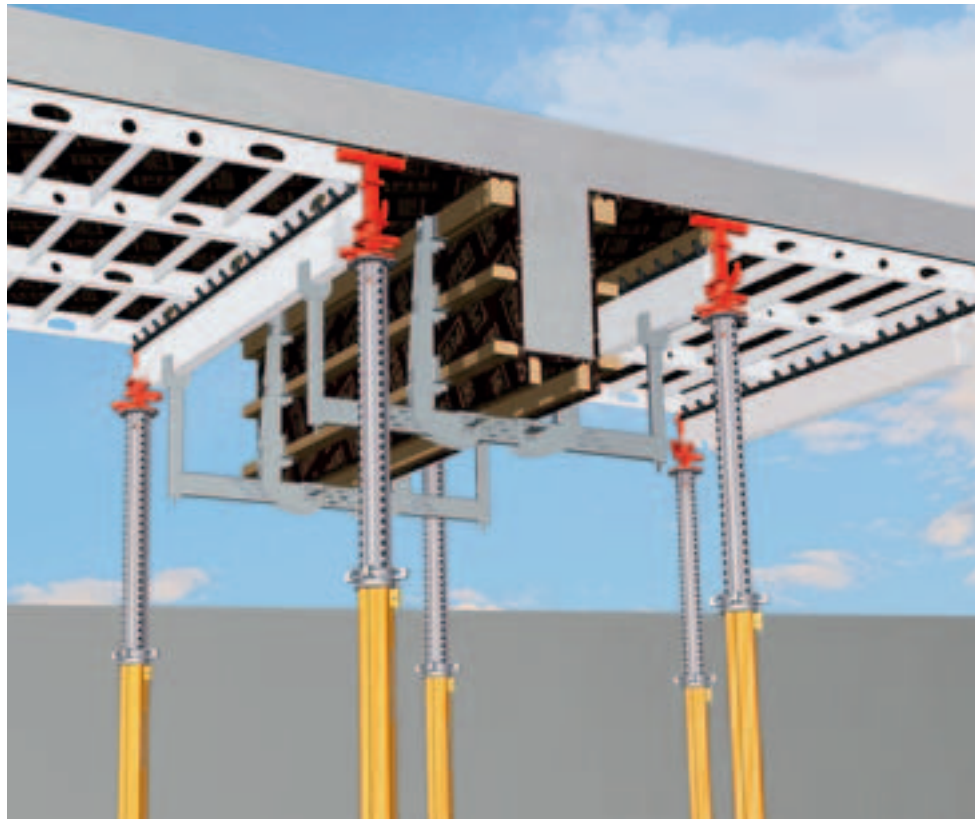
Thanks to the low weight, the Beam Waler SD can be installed by hand and, in the process, allows a high degree of adaptability.

■ Easy and simple assembly

All components are installed by site personnel from a safe position on the ground. The Beam Waler SD is simply mounted on the SKYDECK Main Beam SLT 225 or 150 and is thus integrated in the system. Adjust the size with the wedge, install beams and plywood formlining - ready. Preliminary planning is not required because work is carried out using only one system component.

■ No additional anchors

Up to 60 cm high, the beam waler does not need any additional anchors through the concrete. The hydrostatic concrete pressure is safely accommodated by the system.



■ Beam dimensions

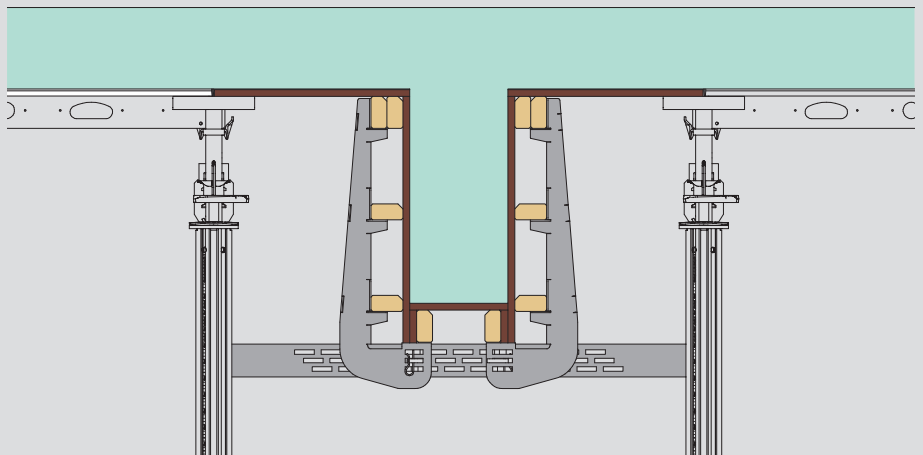
With only one system component - the beam waler - beams up to 30 cm wide and 60 cm high can be formed. Width adjustments are carried out by means of a wedge connection between the side form waler and the beam truss.

Beams up to 30 cm wide and 60 cm high can be formed with the SKYDECK Beam Waler SD.

■ Possible beam positions

The PERI Beam Waler SD has been designed for the SKYDECK grid dimension of 1.50 m. Through the possibility of turning the panels on the short span of 75 cm, each beam position can continuously be installed in the beam field.

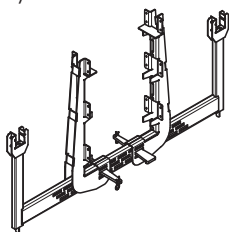
Mounting the Beam Waler SD in the SKYDECK Main Beam SLT 225, 150.



Item no.	Weight kg
115656	33,400

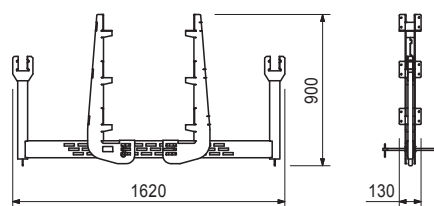
Beam Waler SD

For constructing beams using the SKYDECK system.



Complete with

2 x 117909 Side Form Waler, complete



117909

4,690

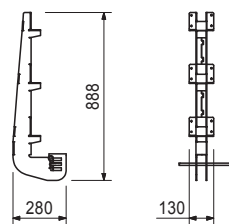
Side Form Waler, complete



Complete with

1 x 115666 Wedge, galv.

1 x 018060 Cotter Pin 4/1, galv.



PERI GmbH
Formwork Scaffolding Engineering
P.O. Box 1264
89259 Weissenhorn
Germany
Tel +49 (0)73 09.9 50-0
Fax +49 (0)73 09.9 51-0
info@peri.com
www.peri.com